

Nautical Paradise



Dalmatia
Šibenik



CROATIA
Full of life



content

INTRODUCTION	3	ANCHORAGES	27
PORTS	4	SABUNI - ISLAND ŽUT	28
PIROVAC	5	PODRAŽANJ - ISLAND ŽUT	28
TISNO	5	VELIKA STUPICA - ISLAND ŽIRJE	29
JEZERA	6	TRATINSKA - ISLAND ŽIRJE	29
BETINA	6	ZMIŠĆICA - ISLAND ŽMINJAK	30
MURTER	7	NOZDRA MALA - KAPRIJE ISLAND	30
KORNATI	8	REMETIĆ - KAPRIJE ISLAND	31
TRIBUNJ	10	NOZDRA VELIKA - KAPRIJE ISLAND	31
VODICE	10	TRATICA - ISLAND KAKAN	32
PRVIĆ LUKA	11	BOROVNJACI - ISLAND KAKAN	32
PRVIĆ ŠEPURINE	11	LOGURUN - TRIBUNJ	33
ZLARIN	12	TIJAŠNICA - ISLAND TIJAT	33
OBONJAN	12	BAY SOLINE - ROGOZNICA	34
KAPRIJE	13	BAY SIĆENICA - ROGOZNICA	34
ŽIRJE -MUNA	13	BERTH - ISLAND KRAPANJ	35
RASLINA	14	REGATTAS AND EVENTS	36
BILICE	14	MARINAS	37
ZATON	14	ACI MARINA ŽUT	38
SKRADIN	16	ACI MARINA PIŠKERA	38
ŠIBENIK	18	MARINA HRAMINA	39
JADRIJA	20	MARINA BETINA	39
ZABLAĆE	21	ACI MARINA JEZERA	40
BRODARICA	22	MARINA PIROVAC	40
KRAPANJ	22	MARINA TRIBUNJ	41
PRIMOŠTEN	24	ACI MARINA VODICE	41
ROGOZNICA	25	DOBRI DOLAC ZATON	42
RAŽANJ	25	ACI MARINA SKRADIN	42
			D-MARIN MARINA MANDALINA	43
			MARINA SOLARIS	43
			MARINA KREMIK	44
			MARINA FRAPA	44
			CHARTER AGENCIES	45
			INFO @ PAM MAP	50
			CONTACTS	54
			IMPRESSUM	55

THE RIVIERA OF ŠIBENIK - NAUTICAL PARADISE

THE MOST INDENTED PART OF THE CROATIAN COASTLINE

Šibenik – Knin County is rightfully called “Nautical Paradise”. Not only a quarter of the whole revenue in nautical tourism of the Republic of Croatia comes from that area, but also the fact that the archipelago of Šibenik counts 249 islands, islets, cliffs and reefs speaks for itself. The total surface of the whole islands of Šibenik area is 665 km². Six islands only in this line of pearls is inhabited – the island of Murter (the largest inhabited island in the County), the island of Krapanj /the smallest inhabited Croatian island), Zlarin, Prvić, the island of Kaprije and the most distant one from the land – the island of Žirje.

Due to the fact that it has the biggest number of islands and islets in the whole area at the Croatian Adriatic Sea, and because it is situated between two well-known national parks – NP KORNATI (the most indented group of islands in the Mediterranean) and NP KRKA (a natural karst phenomenon), THE RIVIERA OF ŠIBENIK offers extremely developed system of ports in nautical tourism, marinas and anchorages for the safe mooring of vessels.

Our maritime zone has 14 marinas with 3671 sea and 950 dry berths, 14 anchorages and numerous charter bases in and out of the system of nautical centers.

The leading ports of Croatian nautical tourism are situated precisely in this area, and the sea, as the substitute for freedom, has been more and more acceptable as a holiday style, witnessed by more and more nautical tourists, spending here their holidays every year.

Sailing equals living up to the hilt – therefore let’s sail, and we wish you a calm sea and pleasant and safe holidays in our marinas and at anchorages.

ŠIBENIK KNIN COUNTY TOURIST BOARD

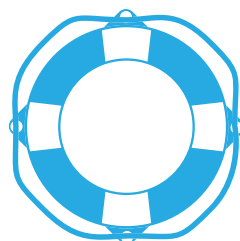
PHOTO: IVO PERVAN





PORTS

Šibenik knin county has 25 ports for public traffic governed by the Port Authority of the Šibenik – Knin county . A total surface of ports is 123 284 m² and the sea surface which they cover is 752 449m².



PIROVAC



PORT PIROVAC

1

43°50,6' N 15°37,8' E

It is situated on the south eastern side of Pirovac cove. It has a concrete stone landing wharf. In the extension of the wharf there is a concrete quay with berths for 300 m long boats. The landing wharf with the landing operative quay (total surface of 80 m + 10 m) - berth for fishing boats and crafts, powerboats, yachts and excursion boats and crafts.

ORIENTATION: Bell tower in the village; light on the L-shaped part of the wharf - green tower with column and gallery.

METHEOROLOGICAL CHARACTERISTICS: Ingoing and outgoing tidal currents (drift up to 0.3 knots) predominate.

CABLES AND PIPELINES: There is a submarine cable at around 80 m west from the port to the opposite side

SERVICES AND SUPPLIES: Hydrant water; post office; bank; public telephone box; several hotels; holiday establishments, several restaurants and shops.

TISNO



PORT TISNO

2

43°47,8' N 15°39,0' E

It is situated on the south eastern side of the island of Murter. The landing wharf with breakwater (total length 60 m) - with berths for fishing boats and crafts, yachts and excursion boats and crafts. The landing operative quay (140 m) - with berths for powerboats, yachts and excursion boats and crafts. The old waterfront (behind the bridge) - transit berth - it has 5 berths and it is 2-3 m deep.

ORIENTATION: Bell tower in the village; light on the breakwater head - red tower with column and gallery.

METHEOROLOGICAL CHARACTERISTICS: It is exposed to bora and scirocco which don't rise higher waves.

CURRENTS: Tidal currents (drift up to 0.8 knots) predominate. Storm scirocco can increase the current drift up to 2.0 knots.

CABLES AND PIPELINES: On both sides of the bridge there are submarine cables between the mainland and the island. About 150 m north west from the bridge there is a pipeline.

REGULATIONS: From 15.05. to 01.09. the bridge is open every day from 09:00 to 09:30 and from 17:00 to 17:30 and in other months it is open on Monday, Wednesday and Friday from 09:00 to 09:30.

NAVIGATION INSTRUCTIONS: In fine weather in south east part of the strait it is navigated in the leading line; the mid-bridge - bell tower in the village of Murter (elevation 77). There are red lights on the iron columns on the bridge ends. When the bridge is open the light on the south end of the bridge changes to green.

WARNING: There are no difficulties in the navigation through the strait from north west to the bridge. In the narrow part of the strait it is necessary to pay attention to strong currents varying in direction. When entering the port and navigating through the strait you should pay attention to a strong current varying in direction.



JEZERA



PORT JEZERA

3

43°47,1' N 15°39,0' E

The port is situated on the south - eastern side of the island of Murter. It has a 60 m long L-shaped concrete stone wharf. In the extension of the wharf a concrete quay is built, with berths for 400 m long boats.

ORIENTATION: there is a chapel on a hill above the village and there is light on the marina breakwater head - red tower with column and gallery.

CURRENTS: Ingoing/outgoing tidal currents (drift up to 0.6 knots) predominate.

BERTH: along the embankment and L-shaped wharf or in the marina.

SERVICES AND SUPPLIES: Water from aqueduct; post office; several restaurants, cafes and shops



BETINA



PORT BETINA

4

43°49,3' N 15° 36,5' E

It is situated on the north - eastern side of the island of Murter. A concrete stone wharf with a 75 m long breakwater was built in the old port. In its extension a concrete 250 m long quay with berths for boats was built.

ORIENTATION: Local bell tower; light on the cape Rat - white tower and light on the breakwater head - green tower with column and gallery.

METEOROLOGICAL CHARACTERISTICS: It is exposed to bora and scirocco. In a strong scirocco the waves reach over the breakwater.

CURRENTS: Incoming/outgoing tidal currents (drift up to 0.4 knots) predominate.

WARNING: Pay attention to a shallow area around the breakwater head. It is not recommendable to anchor in front of the port because of the rocky bottom.

murter



PORT MURTER

5

43°49,4' N 15°35,7' E

It is situated on the north western side of the island of Murter. It has a concrete stone landing wharf with a 115 m long breakwater. In the extension of the wharf there is a concrete quay with berths for 300 m long boats. The landing wharf with breakwater (total surface of 85 m) - berthing of fishing boats and crafts, powerboats, yachts and excursion boats and crafts.

ORIENTATION: The islet of TEGINA with a light - white tower with column and gallery on the base; the chapel on the western side of the cape Gradina; bell tower above the village; light on the breakwater head; red tower with column and gallery and light on the marina breakwater head - red tower with column and gallery.

METHEOROLOGICAL CHARACTERISTICS: It is protected from all winds and waves.

CURRENTS: Tidal currents (drift up to 0.5 knots) predominate.

CABLES AND PIPELINES: there is a wastewater pipeline in mid-passage from the marina breakwater root to the cove entrance.

REGULATIONS: It is forbidden to anchor in the cove Hramina and in the passage between the islet of TEGINA and cape Gradina.

NAVIGATION INSTRUCTIONS: the cove is entered between the cape Gradina and the islet of TEGINA. Other passages are not recommended because they are shallow and the bottom is rocky.



The island of Murter, the largest inhabited island of Šibenik – Knin County, is connected with the land via permanent connection – a bascule bridge, lifted twice a day during summer months, in the settlement of Tisno. On the island there are four settlements: Murter, Jezera, Betina and Tisno, each with its own tradition.

The legend says that when God created the Earth some stones fell down to the blue sea, and when he turned around he was impressed by its beauty and decided to let it be. That was the creation of Kornati, a labyrinth of 152 island, islets and reefs and one of Croatian national parks. Situated in the vicinity of the island of Murter and thus closely connected with life of its inhabitants, The National Park of Kornati consists today of about 80 islands and islets.





TRIBUNJ



6

PORT TRIBUNJ

43°45,2' N 15°45,0 E

It is situated on the outmost western part of the Šibenik channel. There is a 200 m long concrete stone landing operative quay on the peninsula. In the old port there is a concrete quay with berths for 300 m long boats. The landing operative quay is 165 m long - with berths for yachts, powerboats, excursion and fishing boats and crafts. Saint Nikola's wharf (length 100 m and width 70 m) - berths for ferries and fishing boats.

ORIENTATION: Chapel with bell tower on the top of the hill; light on the rock Bačvica - tower with column and gallery on base in the sea colored black with red band and mark on the top - two black spheres one above the other; light on the marina breakwater head - green tower with column and gallery; light on the quay head - green tower with column and gallery.

METHEOROLOGICAL CHARACTERISTICS: It is exposed to scirocco which can be very strong and rise waves rendering stay on berth impossible. Bora can blow very hard but it doesn't rise high waves.

CURRENTS: Tidal currents (drift up to 0,4 knots) predominate. Storm scirocco can increase the current drift up to 1.0 knots.

CABLES AND PIPELINES: There is a submarine cable from the mainland coast, east from the port Tribunj, to the islet Logorun, and from that islet to the island Kaprije.

NAVIGATION INSTRUCTIONS: When approaching the port from west or north west the safest way to enter is through the passage Logorunska vrata, and south east through the channels of Zlarin or Šibenik. It is shallow and hummocky in the passage between the mainland coast and the islets Lukovnik and Logorun (around 1 m) and it is not recommendable to navigate in that area. In the passage between the islets of Lukovnik and Logorun, which is only 20 m wide, the depths are around 3 m, but because of the shoal around the capes it is necessary to navigate in mid - channel.

VODICE



7

PORT VODICE

43°45,4' N 15°46,8' E

The port is situated on the north western part of the channel of Šibenik. It is protected from most winds except the winds blowing from west and south west. A concrete stone landing wharf with breakwater (112 m) - berths for powerboats, yachts and other passenger and excursions boats; A concrete stone landing wharf (105 m - inner part) - berths for powerboats, yachts and other passenger and fishing boats. The landing wharf (105 m - outer part) - berths for passenger and excursion boats.

ORIENTATION: Hill Okit (133 m) with church on the top; bell tower in the village; high building of hotel Punta west from the port; high stone monument in the shape of torch north from the port entrance; long marina breakwater of boulders about 100 m east from the port entrance; light on the waterbreak head - red tower with column and gallery.

METHEOROLOGICAL CHARACTERISTICS: It is exposed to bora and scirocco which can blow with storm force

CURRENTS: Tidal currents (drift up to 0,6 knots) predominate. Storm winds can increase the current drift up to 1.0 knot.

WARNING: In the area between the inflow and the outflow of the river from the lake there are no difficulties for navigation except in front of the north coast near the cape Smokvica which is marked by iron spar beacon coloured black with red band and mark on the top, two black spheres one above the other (isolated danger). When entering pay attention to hummocky shoals Vodice (1,3 m) about 180 m south east from the breakwater light marked by iron spar beacon coloured black with red band and mark on the top two black spheres one above the other (isolated danger); at night the shoal is in the obscured light sector on the breakwater head. It is shallow along the outer part of breakwater with protective wall.

PRVIĆ LUKA



PHOTO: IVO PERVAN

PORT PRVIĆ LUKA

8

43°43,4' N 15°48,2' E

It is situated on the island of Prvić in a naturally formed cove in the south east direction about 2.2 miles west from the lighthouse Jadrija. Along the entire length of the cove - port, on both sides, there are concrete quays with berths for boats. The part of the wharf from the head to the middle of the wharf - berths for passenger boats. From the middle to the root of the wharf - berths for yachts, powerboats and fishing boats and crafts.

ORIENTATION: The islet Lupac with light - red tower with column and gallery; bell tower in the village and light on the breakwater head - green tower with column and gallery.

METHEOROLOGICAL CHARACTERISTICS: It is well protected from all winds with the exception of scirocco which blows strongly but doesn't raise waves.

CURRENTS: Tidal currents (drift up to 0.6 knots) predominate. Storm scirocco can increase the current drift up to 1.5 knots.

NAVIGATION INSTRUCTIONS: The passage between the islet of Lupac and the island of Prvić is 10 m deep; it is recommendable to stay closer to the island of Prvić because the sea along the coast of the islet Lupac is shallow. Around the cliff Galijola the sea is shallow.

WARNING: When approaching from south pay attention to the unmarked cliff Galijola, about 0.5 m south from the port.

The island of Prvić, situated just across the most popular tourist center in the County – the City of Vodice – is known as the island of Faust Vrančić, a Croatian Leonardo da Vinci, the inventor of a parachute and numerous other inventions displayed in THE FAUST VRANČIĆ MEMORIAL CENTER.

PRVIĆ ŠEPURINA



PHOTO: IVO PERVAN

PORT PRVIĆ ŠEPURINE

9

43°44,0' N 15°47,4' E

The port is situated on the north western side of the island of Prvić, approximately 1.4 miles south from the port of Vodice. It has a concrete stone landing wharf with an 80 m long wave breaker, a middle concrete landing wharf with a 100 m long wave breaker and a quay with berths for 250 m long boats. The new 50 m long landing wharf - berths for passenger boats. It is possible to berth other boats and crafts for a limited period of time exceptionally, when there is no regular line boat. The central 83,5 m long landing wharf - with berths for powerboats, yachts, excursion and fishing boats and crafts. The little wharf - the surface of the wharf 999 m², 3 berths available.

ORIENTATION: Bell tower in the village; light on the wharf head - green tower with column and gallery.

METHEOROLOGICAL CHARACTERISTICS: It is exposed to south and north winds and waves.

CURRENTS: Tidal currents (drift up to 0.5 knots) predominate. Storm scirocco can increase the current drift up to 1.0 knot.

ZLARIN



PORT ZLARIN

10

43°42' N 15°50,3' E

The port is situated in the natural cove on the north western part of the island of Zlarin. It is naturally protected from most winds, except the winds blowing from west and north west. It has a 375 m long concrete stone quay for boat berthing. The north side - berths for passenger boats (from the wharf head to the mid-wharf), berths for excursion boats (from the mid-wharf to the wharf root). The south side - berths for powerboats, yachts, excursion and fishing boats and crafts.

ORIENTATION: Bell tower in the village and light on the north wharf head - white square tower with column and gallery.

METHEOROLOGICAL CHARACTERISTICS: It is exposed to north and north west winds which raise waves and cause a swell in the port. Inside the port and along the west side of the wharf boats are protected from bora.

CURRENTS: Tidal currents (drift up to 0,6 knots) predominate. Storm bora and north west wind can increase the current drift up to 1.5 knots.

WARNING: When entering from north pay attention to the shoal Roženik which is marked by light on the north end - green tower with column and gallery on base in the sea, and on the north east end it is marked by a pillar buoy coloured black with yellow band and mark on the top - two black cones one above the other base to base (E cardinal).

Leading line: cape Marin (island Zlarin) - the north east end of the islet of Sestrica Vela leads clear of dangers between the shoals Roženik and Mali Roženik.

Leading line: lighthouse Jadrija - cape Debeli (Saint Ante channel) leads clear of dangers south of the shoal Mali Roženik. About 150 m south from light on the shoal Roženik there are remains of a light construction and concrete base in the sea.

The island of Zlarin, situated more northerly than the island of Krapanj, is famous for the tradition of taking out and the processing of corals, as well as the production of coral jewelry.

OBOŃJAN



PORT OBOŃJAN

11

43°40,8' N 15°47,6' E

It is situated in the middle of the east coast of the islet of Obonjan. Berth for smaller boats and crafts along the wharf.

ORIENTATION: There is a building in pinewood,; sunbathing area in the cove's bottom and light on the wharf head - red tower with column and gallery.

METHEOROLOGICAL CHARACTERISTICS: It is entirely exposed to winds and waves from north east and south east. In stronger scirocco and bora it is impossible to land and stay on the islet. At first indications of scirocco or bora it is necessary to leave the berth immediately.

CURRENTS: Tidal currents (drift up to 0.6 knots) predominate. Storm winds can increase the current drift up to 1.5 knots.



KAPRIJE



FOTO: IVO PERVAN

PORT KAPRIJE

12

43°41,3' N 15°42,8' E

It is situated on the south - western side of the island of Kaprije. It has a 70 m long concrete stone operative wharf. In the extension of the wharf there is a concrete quay with berths for 100 m long boats, from both sides. The north side of the quay - with berths for public passenger boats in a regular line navigation. It is possible to berth other boats and crafts for a limited period of time exceptionally, when there is no regular line boat. The south side of the wharf - with berths for yachts, powerboats and other boats and crafts. Exceptionally, in cases of strong southern scirocco wind, public passenger boat will berth on the south side of the wharf.

ORIENTATION: Electric drive port light (B.Bl.3s, 6m, 3M, white) - white tower with column and gallery.

METHEOROLOGICAL CHARACTERISTICS: It is exposed to north - west winds which can be dangerous.

CURRENTS: Ingoing/outgoing tidal currents (drift up to 0.4 knots) predominate.

REGULATIONS: It is forbidden to anchor in the area north - west from the direction 205° from the wharf head light to the opposite shore. South - east from that direction it is allowed to anchor but landing and departure of ferry mustn't be impeded.

Kaprije, the island named after the kitchen herbs – capers – is well-known to its regular visitors, the nautical tourists, thanks to its safe ports. The island surface is 9.67 km².

ŽIRJE-MUNA



PORT ŽIRJE-MUNA

13

43°39,8' N 15°39,6' E

It is situated on the north eastern side of the island of Žirje. It is the main port of the island in daily traffic of boats journeying to and from the mainland. In this port there is a concrete stone landing wharf with 60 m long breakwater. In the extension of the landing wharf head there is a concrete quay with berths for boats and bigger 200 m long vessels. Berths for passenger boats in a regular line navigation. It is possible to berth other boats and crafts for a limited period of time exceptionally, when there is no regular line boat.

ORIENTATION: Light on the cliff Brak Prašiča - tower coloured black with a red band and mark on the top - two black spheres one above the other (isolated danger); light on the east cape of the cove - red tower with column and gallery; light on the wharf head - green tower with column and gallery; chapel in the bottom of the cove.

CURRENTS: Tidal currents (drift up to 0,5 knots) predominate. Storm winds can increase the current drift up to 1.0 knot.

Žirje, the most distant inhabited island, has a surface of 15.43 km². Once it was densely covered in acorn trees; its present name is derived from it. A special importance on the island belongs to Velika Stupica, a fort from late ancient times built in the 6th century BC.

Raslina



PORT RASLINA

14

43°48,4' N 15°51,6 E

The port is situated on the north western part of the lake Prokljansko jezero. It has a concrete stone landing wharf with a 60 m long wave breaker. In the extension of the concrete stone landing wharf there is a concrete quay with berths for 140 m long boats. In strong scirocco it is not recommendable to stay berthed. In bora it is highly recommendable to leave the port.

ORIENTATION: Chapel of Saint Mihovil south east from the port and light on the breakwater head - red tower.

METHEOROLOGICAL CHARACTERISTICS: It is exposed to bora and scirocco which raise high waves.

CURRENTS: Tidal current towards south (drift up to 2.0 knots) predominates, during a strong inflow of the Krka river.

WARNING: when approaching from S, pay attention to the cliff Dragačin south east from the cape of Saint Mihovil, it is marked by a concrete square beacon coloured black with a yellow band and mark on the top - two black cones one above the other base to base (E cardinal). The cliff lies in the obscured light sector in the port Raslina and in the red light sector on the west cape of the cove Margaretuša.

BILICE



PORT BILICE

15

Port Bilice is located in the south – eastern part of Prokljan Lake . The port is currently under construction and so far, an 85 m long pier with 30 m vessel accomodation capacity has been completed.

ZATON



PORT ZATON

16

43°47,1 N 15°49,7 E

It is situated on the south eastern part of the Krka river waterflow or north western part of the inlet of the Šibenik cove, in the bottom of the cove of the same name, approximately 4 M from the port of Šibenik. It has a 150 m long concrete stone landing operative quay. In the extension of the landing operative quay in the direction of north west there is a 250 m long operative quay for boat berthing. In the direction of south there is a 700 m long quay built in dry stone which is also used for boat berthing.

ORIENTATION: Bell tower in the village and light on the quay - green tower with column and gallery.

METHEOROLOGICAL CHARACTERISTICS: Winds from south east and south can cause troubles to boats on berths.

CURRENTS: Gradient currents (drift up to 1,0 knot) predominate.

CABLES AND PIPELINES: There is a submarine cable from lights on the quay to the opposite shore.

WARNING: In the cove along the shore there are shellfish farms.



Prokljan lake which is also Croatia's second largest lake (11,5km²) and the channel of st. Joseph that is connected to the Bay of Šibenik are among the most valuable entities in this area.



SKRADIN



PHOTO: IVO BIOČINA



SKRADIN – the unavoidable port for nautical tourists

The City of Skradin, connected with Šibenik by the Krka canyon, represents also the maritime entrance into The National Park “Krka” and therefore it is especially important for nautical tourists, due to the fact that there is the closest MARINA in the immediate vicinity of a karst phenomenon and the biggest travertine barrier in Europe, the beautiful waterfall of SKRADINSKI BUK.

The port is situated on the right bank of the river Krka in the Rokovača cove, about 8 m upstream from the port of Šibenik. It is protected from all stronger winds, and suitable for vessel anchoring all through the year. It has an 80 m long concrete landing operative quay.

The landing operative quay - with berths for passenger boats, powerboats, yachts and excursion boats and crafts.

ORIENTATION: High white bell tower in the village; pontoons of the marina on the south west cape and light on the south east corner of the quay - green tower with column and gallery.

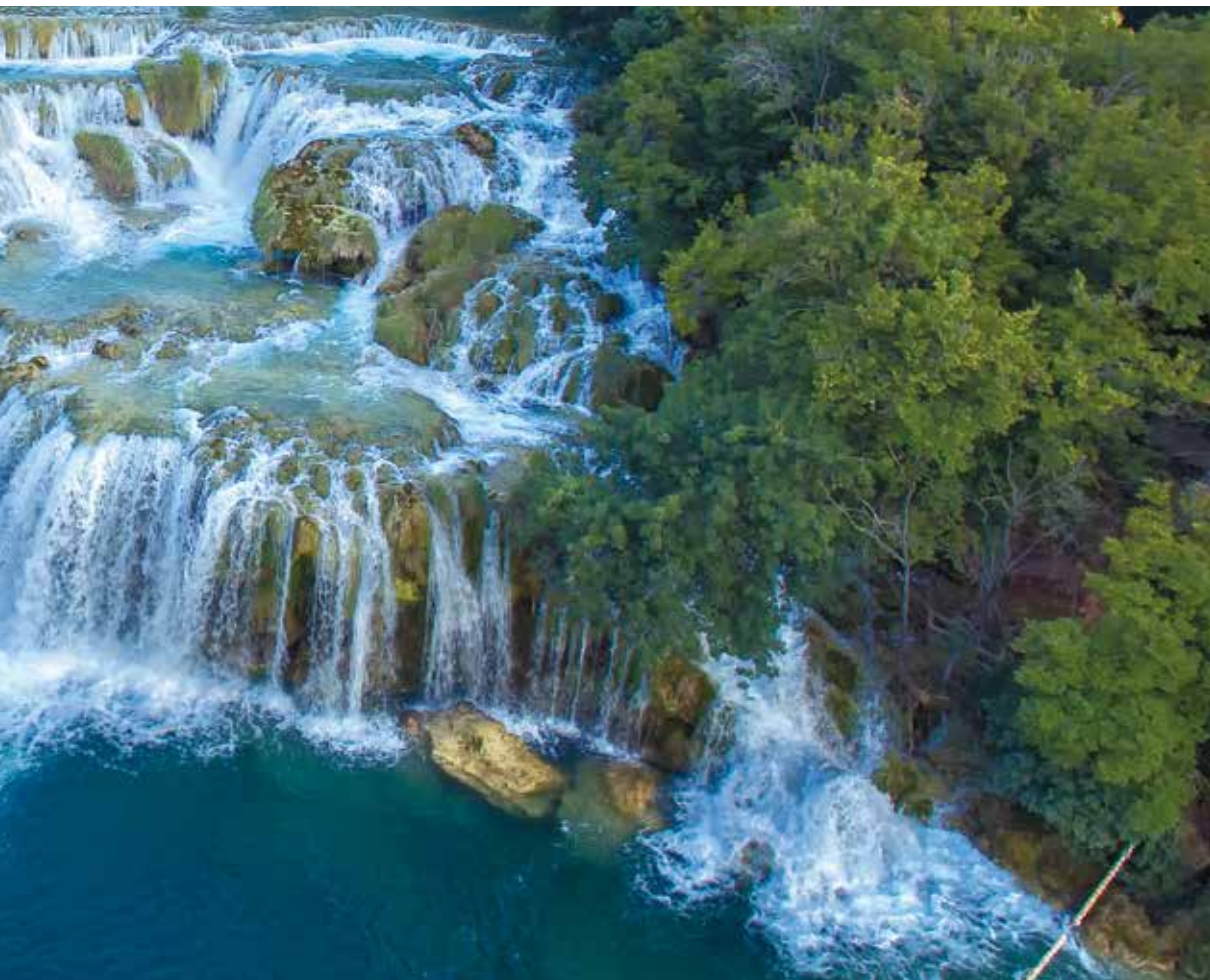
METHEOROLOGICAL CHARACTERISTICS: It is exposed to bora and scirocco which do not raise high waves.

CURRENTS: During a poor inflow of the Krka river the current up to 0,5 knots of drift predominates, and during a strong inflow it goes up to 0,3 knots.

REGULATIONS: Maximum speed limit of navigation is 3 knots. It is forbidden to anchor in the area between the cape Karolić and the cove Dunkovac.

NAVIGATION INSTRUCTIONS: When approaching the port it is necessary to round the cape Oštrica with a light - green square tower, pay attention to a shoal (3,3m) near light on the cape Lukovo - red tower on base which is connected to the north cove by an underwater sill (4,5m) and you should navigate closer to the south bank because of the shoal.

WARNING: The area between the inflow and the outflow of the river from the lake is safe for navigation except a shoal in front of the north bank near the cape Smokvica which is marked by iron spar beacon coloured black with red band and mark on the top - two black spheres one above the other (isolated danger). In the part of the lake Prokljan to the port Skradin the river Krka is partially narrowed up to 100 m, and it is 8-13 m deep, in the initial half (to a shoal of 3,3 m in front of the north bank) and further to the port Skradin the fairway narrows down to 80 m, with depths of 7-8 m.





ŠIBENIK



Narrow port area has: 1. OBALA HRVATSKE MORNARICE (Croatian navy coast): a 200 m long concrete stone landing operative quay. This quay is used for docking passenger boats and yachts, 2. OBALA DR. FRANJE TUĐMANA AND KRKA QUAY: - It is a 230 m long concrete stone landing operative quay. It is used for docking yachts and vessels in daily charter, 3. the Krka quay is a 100 m long concrete stone landing operative quay. It is used for docking passenger boats and other crafts. In the port of Šibenik the following berths are available: The port TEF - for discharging bulk cargo, a 100 m long operative coast; Martinska - berths for transit boats, a 100 m long operative quay; the Saint. Petar cove - berths for tourist and fishing boats, a 200 m long operative quay; the Dumboka cove - taking petrol from the petrol station Lukoil, a 260 m long operative quay

ORIENTATION: Light on the Krka quay head- white tower with column and gallery: the fortress of Saint.Ana; a dominant Cathedral cupola

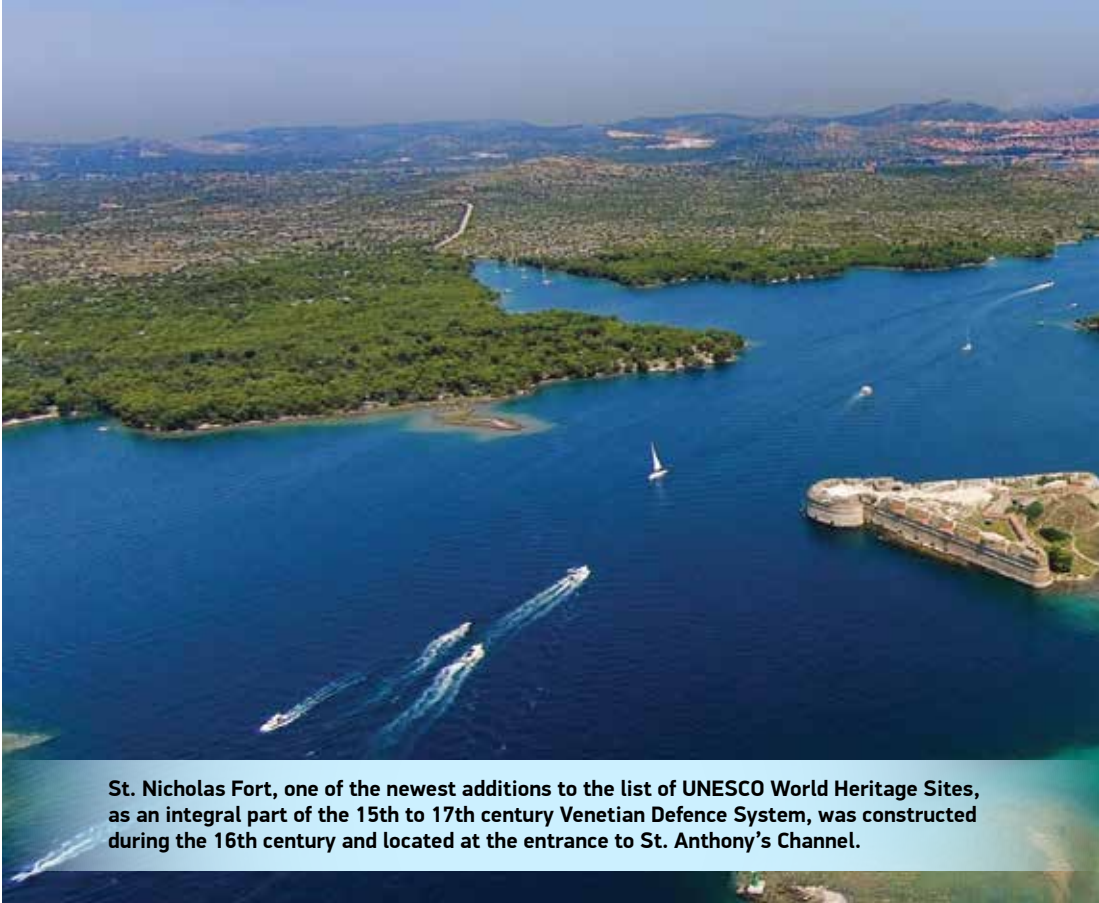
METHEOROLOGICAL CHARACTERISTICS: It is exposed to south west and west winds which can be dangerous for little boats. The west side of the quay Krka is only exposed to west wind, and the east side to south winds.

CURRENTS: Outgoing tidal current (drift up to 0.5 knots) dominates during a poor inflow of the river Krka, and it goes up to 2.0 knots during a strong inflow. In scirocco the current along the north east coast has the south east direction and it is particularly strong along the Krka quay.

REGULATIONS: It is forbidden to approach and land along the coast south from line joining Burnji Turan - cape Ravna - cape Kuline.

WARNING: Pay attention to a shoal (6,7 m) about 400 m north west from the cape Klobučac and a shoal Paklena in front of the cape Paklena, which is marked with light - green tower with column and gallery on base in the sea.





St. Nicholas Fort, one of the newest additions to the list of UNESCO World Heritage Sites, as an integral part of the 15th to 17th century Venetian Defence System, was constructed during the 16th century and located at the entrance to St. Anthony's Channel.

Jadrija



PORT JADRIJA

19

45°43'32,45"N
15°51'08,61"E

It is situated on the northern entering cape of Saint Ante channel in front of the port Šibenik. In the western part of the cove a concrete stone wharf was built. It is 40 m long and it is suitable for berthing of bigger vessels during the tourist season.

ORIENTATION: On the southern side of the channel entrance there is Saint Nikola fortress and beside it there is light - green tower; lighthouse Jadrija - stone tower beside signal station house; south from the entrance, on the outmost north - eastern part of shoal Jadrija there is a red lighting buoy with column and mark on the top - red cylinder (lateral left); on the southern side of the channel entrance there is light on the cliff Ročni - green tower with column and gallery on base in the sea.

METEOROLOGICAL CHARACTERISTICS: It is exposed to winds blowing from south - west and north - east, which blow along the canal.

CURRENTS: In the area north from the entrance of Saint Ante channel (Cape Saint Cross) outgoing tidal currents predominate. During a poor inflow of the Krka river current drift is up to 0,5 knots, and during a strong inflow it goes up to 3.0 knots. South from the entrance the current is weaker; severe bora increases the current. Along the northern side of the channel the current is stronger, especially near the capes Turan (Burnji and South), Baba and Jadrija.

CABLES AND PIPELINES: There is a submarine cable from the cape Baba to the opposite side.

NAVIGATION INSTRUCTIONS: In the channel you should navigate on the right side. Near the cape Senišna you should navigate at 80 m away due to shoal. In the eastern side of the channel you should turn to the cape Butnji on time because of the current which enters to the channel from north - west.



The Šibenik Channel of St. Anthony (Sv. Ante) and Šibenik harbour, is one of the most beautiful parts of the Adriatic coast and the most gorgeous maritime entrances into Šibenik, the administrative, cultural and political center of Šibenik – Knin County. Along with natural beauties noticeable at the first sight and the magnificent panoramic view to the city dominated by the beautiful Renaissance cathedral of St. James protected by UNESCO and the fortresses surrounding the city, the channel hides numerous cultural and natural values.

ZABLAČE



PORT ZABLAČE

20

43°42,3' N 15°52,2' E

The port has a concrete stone landing wharf with 60 m long breakwater. It is used for berthing of smaller passenger boats and cargo ships loading and unloading construction material. In the extension of this coast there is a concrete quay with berths for 240 m long boats. In some parts of the port it is necessary to dredge certain parts of the port to improve the functionality of berthing quays.

ORIENTATION: Chapel near the breakwater root; cable house on the north cape and light on the breakwater head - green tower with column and gallery.

METHEOROLOGICAL CHARACTERISTICS: It is exposed to scirocco which rises moderate waves.

CURRENTS: Tidal currents (drift up to 0,6 knots) predominate. Storm winds can increase the current drift up to 1.5 knots.



BRODARICA

PORT BRODARICA

21

43°40,6' N 15°55,6' E

It is situated on the southern side of the Šibenik channel. It is open to winds blowing from south, west and north - west. It is not suitable for smaller boats berthing. It has a 30 m long concrete landing operative quay, which is used for berths for a smaller ferry in daily waterways traffic with island Krapanj. In extension of the mentioned quay a concrete quay with berths for boats longer than 200 m is built. Landing operative quay 33 m long - with berths for passenger boats. It is possible to berth other boats for a limited period of time exceptionally, when there is no regular line boat.

METEOROLOGICAL CHARACTERISTICS: It is completely exposed to scirocco, and protected from bora.

CURRENTS: Tidal currents (drift up to 0.8 knots) predominate.

BERTH: For smaller boats

KRAPANJ



PORT KRAPANJ

22

43°40,3' N 15°55,5' E

It is situated on the island of Krapanj. It is composed of two ports. The Old port has: an L-shaped concrete stone wharf with 100 m long breakwater; a 60 m long landing operative wharf (concrete construction); a concrete stone quay with berths for 100 m long boats. The port provides suitable docking for smaller ferries and other vessels, and at the same time it is suitable for berthing of boats all through the year because it is protected from all the winds with the exception of those blowing from the direction of north. A landing wharf with wave breaker (length 61 m) - berthing of fishing boats and excursion boats and crafts.

ORIENTATION: Bell tower in the village, and light on the breakwater head - red tower with column and gallery.

METHEOROLOGICAL CHARACTERISTICS: It is exposed to Bora, Maestrale, and Tramontana, but protected from south, south - west, and west winds, and partially from Scirocco.

CURRENTS: Tidal currents (drift up to 0.6 knots) predominate. Storm winds can increase the current drift up to 1.5 knots.

CABLES AND PIPELINES: There are several submarine cables and a submarine pipeline in the channel between the island and mainland.

WARNING: Approaching from the north you should pay attention to the shoal (1.7 m) at around 300 m south east from the cape Grmina and to the shoal Krapanj, at 0.8 miles north west from the island, which is marked by light on the north west edge - red tower with column and gallery on base in the sea; at around 150 m west from the light there is a spar beacon coloured red with a mark on the top - red cylinder (lateral right). In the middle of that shallow area the cliff Kraplun slightly arises from the sea. The shoal and the cliff are in the obscured light sector on the north west part of the shoal.



The island of Krapanj, widely known as the island of sponges, is the smallest inhabited and lowest island in Croatia (only 1.5 m high)



PRIMOŠTEN



PORT PRIMOŠTEN

23

43°35,1' N 15°55,8' E

The old port with a concrete stone landing wharf with 75 m long wave breaker, in the extension there is a concrete quay with berths for 70 m long boats. The old waterfront - wharf with wave breaker (82 m) - berths for fishing boats, smaller yachts and powerboats. The old waterfront - operative quay (73 m) - berths for fishing boats, smaller yachts and powerboats. The new port - "SOUTH" (75 m) - berths for ferries and other boats for transportation of passengers and goods, berths for fishing boats and yachts. The new port - "EAST" and "WEST" (each 30 m) - berths for powerboats, yachts and smaller fishing boats.

ORIENTATION: High bell tower and church among houses on the high point of the hill; light on the cape Kremik - white tower; light on the breakwater head - red square tower with column and gallery; buildings in holiday establishments on the east side of the cove; light on the quay head in the cove Vojske - red tower on base.

METHEOROLOGICAL CHARACTERISTICS: It is exposed to winds blowing from the sea; boats berthed in the inner part of the breakwater are protected from winds and waves.

CURRENTS: Tidal currents (drift up to 0.5 knots) predominate. Storm winds can increase the current drift up to 1.0 knot.



ROGOZNICA



PORT ROGOZNICA

24

43°31,6' N 15°58,4' E

The port is situated on the islet in the middle of the Rogoznica cove. There is a 100 m long concrete stone landing operative quay in the port. In the extension of the landing operative quay there is a concrete quay with berths for 320 m long boats. The port as well as the complete cove are protected from all winds, and the depth is suitable for berthing of bigger vessels. In this cove there are several more naturally formed coves used for berthing of boats. The port and the entire cove provide a safe harbour for ships during storms. It is an ideal berthing place for local and foreign vessels during winter, with little anchoring investment. The new waterfront - the operative quay is intended for berthing of boats for tourist purposes, of yachts, powerboats and other excursion vessels. The coast - 157 m south from the port light - intended for berthing of smaller vessels; Port for fish landing - intended for berthing of fishing boats - surface 15000 m², it has 6 berths. Depth 4 m.

ORIENTATION: Light on the cape Gradina - red square tower; bell tower in the village; light on the south corner of the quay - green tower with column and gallery.

METHEOROLOGICAL CHARACTERISTICS: It is well protected from all winds and waves.

CURRENTS: Ingoing/outgoing tidal currents (drift up to 0.4 knots) predominate.

BERTH: Lateral or quarter mooring along the quay.

Ražanj



PORT Ražanj

25

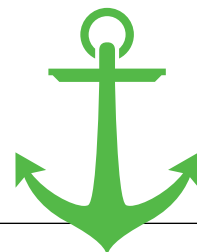
43°30'46,56"N 15°58'41,14"E

The port is situated on the south western part of the Rogoznica cove and it is naturally protected from most winds, except the winds blowing from south west and west. In the port there is a 40 m long concrete stone quay. Apart from this landing operative quay there is a series of concrete and dry-stone piers with berths for smaller boats in the port.

In the following period a complete adaptation of the coast is planned in this port, for the purpose of building berths that would accommodate local and foreign users.

In the vicinity of Rogoznica there is a cape Ploče (Punta Planka) called the Diomedes' Cape by Greek sailors many centuries B. C. which Diomedes himself had allegedly reached after the Trojan War





Anchorages

In the area of the Šibenik - Knin county 14 ports of special purpose - nautical tourism ports- are currently being subjected to concession. Anchorages with altogether 328 buoys for berthing (in Physical plan of the Šibenik - Knin county 40 locations of anchorages with a maximum number of 773 buoys for berthing of vessels are indicated). Information on anchorages that are being subjected to concession (information on concession providers, concession holders and anchorages) are indicated in the chart presentation.

Regulation and organisation of anchorages diminishes a negative influence of unorganised anchoring of yachtsmen. Fixed concrete blocks with buoys tied up with chains are set up on anchorages and in that way a habitat of sea organisms doesn't get destroyed (except for a minimum influence on spots where blocks are set up). A danger of transmission of invasive species (*Caulerpa sp*) is also diminished. The communal waste is collected in an organised way and emission of any waste-waters on the anchorage is being controlled. A concession holder takes over a responsibility of managing the communal waste in conformity with Law on Waste and Regulation on types of waste.

sabuni - ISLAND ŽUT

1

43°52'14.4" N 15°19'28.7" E

GSM +385 98 757165

ANCHORAGE EQUIPMENT:

Hospitality services, waste disposal

BUOY NUMBER:

10

SEA SURFACE:

16 200 m²

Podražanj - ISLAND ŽUT

2

43°52'59.1" N 15°17'12.8" E

ANCHORAGE EQUIPMENT:

Protective floating dam, specialised vessel for protection from fire, sudden pollutions or other; communal waste disposal

BUOY NUMBER:

15

SEA SURFACE:

30 600 m²



VELIKA STUPICA - ISLAND ŽIRJE

3

43°38'5.6" N 15°40'56,3" E

GSM +385 98 337 028

ANCHORAGE EQUIPMENT:

Garbage containers; environment protection equipment,
video surveillance and hospitality services

BUOY NUMBER:

20

SEA SURFACE:

39 600 m²

TRATINSKA - ISLAND ŽIRJE

4

43°39'53,7" N 15°37'17,6" E

GSM +385 99 853 33 00

ANCHORAGE EQUIPMENT:

3 buoys for mega yachts
(1 t blocks/per buoy); garbage
containers; hospitality services

BUOY NUMBER:

22

SEA SURFACE:

43 498 m²



ZMIŠĆICA - ISLAND ŽMINJAK

5

43° 83' 94,99" N 15° 15' 57' 44,07" E

ANCHORAGE EQUIPMENT:

Hospitality services, waste disposal

BUOY NUMBER:

10

SEA SURFACE:

17 000 m²

NOZDRA MALA - KAPRIJE ISLAND

6

43° 40' 49,54" N 15° 43' 19,86" E

GSM +385 098 336-335

ANCHORAGE EQUIPMENT:

Hospitality services, waste disposal

BUOY NUMBER:

15

SEA SURFACE:

30 600 m²



Remetić - KAPRIJE ISLAND

7

43°42'45.8" N 15°41'02,137"E

ANCHORAGE EQUIPMENT:

Environment protection
equipment, video surveillance,
service of boats

BUOY NUMBER:

10

SEA SURFACE:

16 200 m²

NOZDRA VELIKA - KAPRIJE ISLAND

8

43° 41'09,59" N 15°43'30,14"E

Tel: +385 22 559 900

ANCHORAGE EQUIPMENT:

Waste disposal

BUOY NUMBER:

14

SEA SURFACE:

21 600 m²



Tratica - ISLAND KAKAN

9

43°41'31,4'' N 15°40'44,7'' E

GSM +385 91 5916418

ANCHORAGE EQUIPMENT:

Environment protection equipment,
video surveillance, service of boats,
hospitality services

BUOY NUMBER:

16

SEA SURFACE:

27 000 m²

Borovnjaci - ISLAND KAKAN

10

43°41'50,1'' N 15°39'43,9'' E

GSM +385 91 591 6418

ANCHORAGE EQUIPMENT:

Environment protection
equipment; video surveillance,
service of boats

BUOY NUMBER:

60

SEA SURFACE:

91 800 m²



LOGORUN - TRIBUNJ

11

43° 44' 35" N 15° 45' 02.2" E

GSM +385 22 446 105

ANCHORAGE EQUIPMENT:

Hospitality services

BUOY NUMBER:

-

SEA SURFACE:

-

TIJAŠNICA - ISLAND TIJAT

12

43° 43' 01,09" N 15° 46' 29,96" E

GSM +385 22 444 591

ANCHORAGE EQUIPMENT:

Waste disposal

BUOY NUMBER:

20

SEA SURFACE:

27 200 m²



BAY SOLINE – ROGOZNICA

13

43°53'19" N 15°96'15" E

Tel. +385 22 559 900

ANCHORAGE EQUIPMENT:

Hospitality services, waste
disposal

BUOY NUMBER:

16

SEA SURFACE:

18 365 m²

BAY SIĆENICA – ROGOZNICA

14

43°30'43.5" N 16°1'16" E

Tel. +385 22 558 452

ANCHORAGE EQUIPMENT:

Environment protection
equipment, video surveillance,
service of boats

BUOY NUMBER:

10

SEA SURFACE:

16 005 m²



BERTH

15

ISLAND KRAPANJ

43° 40' 19.6" N 15° 55' 07.3" E

GSM +385 22 348 900

ANCHORAGE EQUIPMENT:

Hospitality services

BUOY NUMBER:

-

SEA SURFACE:

-



PHOTO: BARSLAV KARLIĆ

TRADITIONAL REGATTAS AND EVENTS

KORNATI CUP (APRIL)

The idea about the sailing regatta Kornati cup came spontaneously on the Day of Our Lady in 1984, when a group of sailing lovers emerged with three boats from Murter towards Piškera. Already in the next year, 1985, the first regatta in Austrian-Croatian production gathered 27 boats and became the traditional one in the Easter time. In 1988 there were 118 boats participating the Kornati Cup, what made it one of the biggest regattas on the east side of the Adriatic. www.tzo-murter.hr

TRADITIONAL ZLARIN – REGATTA (APRIL) www.tz-zlarin.hr

LIONS REGATTA ‘SAILING AGAINST DRUGS’- MURTER (APRIL) www.lions.hr

MURTER CUP REGATA (MAY)

Murter – Šibenik – Kornati – Murter www.tzo-murter.hr

THE MADONNA OF TARAC – MURTER – KORNAT (JULY)

A little church dedicated to the Madonna of Tarac is a modest single-naved sacral building (a type of the rural late Romanesque church). It was built on the place of an old Christian basilica; the remains of the old church were probably used in the construction of the new one. The church is still used for the ceremony of the Holy-Mass (every first Sunday in July), taking it out of the standard religious frames and making it a part of the tourist attraction of Murter. www.tzo-murter.hr

LANTINA – TRADITIONAL REGATTA – LATIN SAIL – JEZERA (JULY) www.tzjezera.hr

LATINSKIN IDRUN NA KUREJA- ZLARIN – TRADITIONAL (JULY) www.tz-zlarin.hr

HAVEN OF WOODEN SHIPBUILDING IN BETINA (AUGUST)

Gajeta of Betina is a solid farmer's boat with Latin sail which was used by the local people in 1740 to sail to their distant estates in Kornati, Modrave, Prosika and Lake Vrana. In the honour of this "sacred vessel" every year a Regatta for "Body and Soul" is held, a competition in wooden boats. www.tz-betina.hr

REGATTA BURTIZ – PRVIĆ ŠEPURINE (AUGUST)

This regatta was named after the skill of sailing with a Latin sail - burtižanje. Sailors and tradition admirers will meet in Šepurine on island Prvić for the seventh time. In a friendly atmosphere, they will race in their leuts, gajetas, batanas and other traditional boats.

Festivity will last all day. www.vodice.hr/en/events

REGATTA „LATIN SAIL “ MURTER (SEPTEMBER)

The regatta Latinsko idro (Latin sail) was organised for the first time in 1998 in honour of the fest of St. Michael, the patron of the parish of Murter. Latinsko idro is a reminder of a lifestyle and of the spiritual world. Latinsko idro is a synthesis of all the actions and methods, knowledge and crafts, all the sea skills and testing, of spirit and believing, of everything intertwined in this area. The event Latinsko idro has a rich cultural-entertainment-educational program. There are different workshops for young people demonstrating the sea skills, but also different presentations, lectures, exhibitions, evenings of the typical word in the authentic ambience of the Kornati's house, the traditional breakfast on the old waterfront, etc. The culmination of the week is the Regatta itself passing exclusively the old sailing ways of the past times. The awards for the best competitors need to be original and typical ones supporting the main goals of the Latinsko idro – originality, youth, experience and honour. So the awards are "the sail", "the paddle", "the wheel" and others. www.latinskoidro.hr

ROUND LONG ISLAND RACE- ZLARIN (OCTOBER) www.tz-zlarin.hr

REGATTA JABUKA (NOVEMBER)

The legendary offshore regatta takes yachtsmen along 110 miles enduring route Vodice - Jabuka - Vodice. The regatta is famous for the night start and mystical Jabuka, with characteristic strong wind and a long and exhausting race JK Tijat - Vodice. www.tijat.adriatica.biz

ORCI CROATIA OPEN (NOVEMBER)

The OPEN CROATIAN CHAMPIONSHIP is organized by the SC "Tijat" Vodice under the authority of Croatian association ORC boats, Croatian Sailing Federation and overall authority of the Offshore Racing Congress (ORC) and the International Sailing Federation (ISAF).

SIBENIK CRUISER REGATTA (DECEMBER)

Šibenik cruiser regatta has been held 13 times in a row in December on behalf of St. Nicholas. Over 50 cruisers and 500 guests from Croatia and abroad, take place in this regatta. Taking place parallel with this regatta is the Yacht Fair. The regatta takes place in the waters of the Port Šibenik, and can be seen and watched from the waterfront or maybe one of Šibenik's fortresses. www.jkval.hr



marinas

There are 56 marinas in Croatia, and they are all associated in the Alliance of Croatian marinas, of the capacity of 16.000 berths in the sea, 8.500 spots for dry boat setting and 30.000 berths in ports and sport ports. Marinas are continuously working on enrichment and rise of the level of service, and they are adjusting to contemporary needs and wishes of nautical guests. Many ports of nautical tourism have additionally improved their facilities: from top quality traditional cuisine, obligatory water and electrical energy, medical clinic, charter company service, to apartment usage, electronic surveillance, possession insurance and guest service. There are 14 marinas in the area of the Šibenik - Knin sea surface.



3

Marina Hramina

It is situated in a well protected and safe cove Hramina, on the south western part of the island of Murter which is only 7 nm away from unique archipelago of Kornati. It is open all through the year. All berths are equipped with water and electricity connections.

🏠 Put Gradine bb, 22 243 Murter

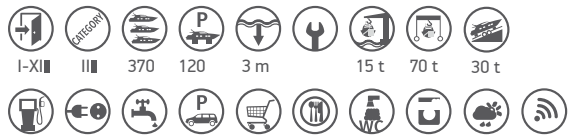
☎ +385 (0)22 434 411

☎ +385 (0)22 435 242

🌐 www.marina-hramina.hr

✉ info@marina-hramina.hr

📍 43°49,15' N 15°35,32' E



4

Marina Betina

It is situated on the north eastern side of the island of Murter. It was built on 200 year old architectural tradition as a result of unique architectural solution.

🏠 Nikole Škevina bb, 22 244 Betina

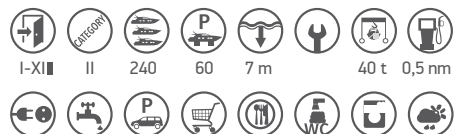
☎ +385 (0)22 434 497 / +385 (0)22 434 498

☎ +385 (0)22 434 497

✉ marina-betina@si.t-com.hr

🌐 www.marina-betina.hr

📍 43°49,6' N 15°36,4' E





5

ACI Marina Jezera

On the island of Murter, it is situated in the southern part of the cove Jezera. It is protected by breakwater on the east side. Open all through the year.

- 🏠 Obala Sv. Ivana 48, Jezera
- ☎ 022/439-295
- ☎ 022/439-294
- 🌐 www.aci-club.hr
- ✉ m.jezera@aci-club.hr
- 📍 43°47,1' N 15°39,2' E



6

Marina Pirovac

Marina "Pirovac" is placed in the heart of old Dalmatian village Pirovac, in Pirovac bay. Protected from wind, it is safe harbour for 200 boats. Except the berth, marina "Pirovac" offer numerous services. With standard use of sanitary facility, water and electricity, we offer boat service and travel lift. Entire complex contains service, reception, restaurant, cafe bar, supermarket, playground, park

- 🏠 Obala Rtine, 22213 Pirovac
- ☎ +385 (0)99 702 8261
- ✉ pirovac.marina@gmail.com
- 🌐 www.marinapirovac.com
- 📍 43°48'58,32" N 15°39'47,65" E





7

Marina TRIBUNJ

The position of marina itself guarantees a peaceful inside of the port in all winds. The reception is open all through the year. In summer period from 7 am to 11 pm, and in winter period from 8 am to 4 pm. A 24/7 security and qualified guards take care of boats and cars in the marina area.

- ☎ +385 (0)22 447 145
- ☎ +385 (0)22 447 148
- 🌐 www.marinatribunj-adriaticq.com
- ✉ marina-tribunj@adriaticq.com
- 📍 43°45''N 15° 45'' E

I-XI	II	220	150	5,5 m	80 t	2 t			
				50 m					



8

ACI Marina VODICE

It is situated on the north eastern part of the port of Vodice (cove Vrulje). It is protected by two breakwaters. It is open all through the year.

- 🏠 22 211 Vodice
- ☎ +385 (0)22 443 086
- 🌐 www.aci-club.hr
- ✉ m.vodice@aci-club.hr
- 📍 43°45,2' N 15°47,0' E

I-XII	II	273	50	3,3 m	10 t	60 t			



9

DOBRI DOLAC ZATON

It is situated on the northwest part of the Šibenik Bay, 10 km away from Šibenik. Sea is here exceptionally calm and never displays it's rage.

- 🏠 22 215 Zaton, Dobri dolac bb
- ☎ +385 22 310 103
- @ croatia@dreamycharter.hr
- 📍 43°46'39"66"N, 15°49'48.22"E

 I-XII	 III	 30	 12	 4 nm	
 1 km	 1 km				



10

ACI Marina SKRADIN

It is situated in the cove north west from the port in Skradin. Due to sweet water in the marina pool, sailors, and especially owners of wooden boats, leave their vessels gladly during the winter.

- ☎ +385 (0)22 771 365
- ☎ +385 (0)22 771 163
- 🌐 www.aci-club.hr
- @ m.skradin@aci-club.hr
- 📍 43°49,0' N 15°55,6' E

 I-XII	 III	 180	 7 m	 8 nm	
 1 km	 1 km				



11

D-MARIN Mandalina

Marina Mandalina is situated in the cove of Šibenik on the peninsula of Mandalina. It is 10 minutes drive from the main highway and 40 minutes drive from airports in Zadar and Split.

☎ +385 22 460 800

☎ +385 22 460 802

@ mandalinareception@d-marin.com
mandalina@d-marin.com

🌐 www.mandalinamarina.hr

📍 43°43,0' N 15 54,3' E



I-XII

III

429

50

30 m

1,5 t

50 t

0,5 nm



12

Marina solaris

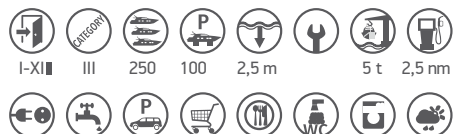
Solaris Yacht Marina is situated in the bay right next to the Solaris Camping Beach Resort and Solaris Villas Komati. Yacht Marina is specific because of its great geographic location, good wind protection and vicinity of the Krka and Komati national parks, picturesque and beautiful archipelago of Šibenik with its numerous islands, islets and cliffs.

☎ 022/364-440

@ info@solaris.hr

🌐 www.solaris.hr

📍 43° 42'00"N 15°53'20" E



I-XII

III

250

100

2,5 m

5 t

2,5 nm



Marina Kremik

13

One of the most protected marinas on the Adriatic, it is situated in a picturesque cove south from Šibenik. It is open all through the year.

- ☎ +385 (0)22 570 068
- ☎ +385 (0)22 571 142
- 🌐 www.marinakremik-adriaticq.com
- ✉ marina-kremik@adriaticq.com
- 📍 43° 34' 15" N 15° 56' 31" E

I-XII	II	393	200	4 m	5 t	80 t	
						2 km	



Marina Frapa

14

One of the biggest Croatian marinas, situated on the middle part of the Croatian coast, between cities of Šibenik and Split, in Rogoznica, in a beautiful cove Soline protected from all sides. The island where all marina facilities are situated, as well as 9 quays on 135.000 m², render it the beauty among other marinas. The proof of that are three Zlatna jedra (Golden sails) - the prize of Večernji list (newspaper) for the best marina on the Adriatic, and a prestigious prize Plava zastava (Blue flag) for environment protection.

- ☎ +385 (0)22 559 900 / +385 (0)22 559 931
- 🌐 www.marinafrapa.com
- ✉ frapa@marinafrapa.hr
- 📍 43°31' N 15°58' E

	I-XII	I	480	100	15 m		75 t	

CHARTER AGENCIES

BILICE			
DOMET	-	perica.elez@si.t-com.hr	+385 98 209806
LABUD YACHTING	www.ankoracharter.com	info@ankoracharter.com	+385 99 2265 650
WADEWITZ I FISCHER INVESTMENT D.O.O.	www.offshore-boote.com	mail@roccofisches.de; marina@ offshore-boote.com	+49 1719304054
BETINA			
MARINA & YACHTING DEVELOPEMENT d.o.o.	www.marinayachting.hr	marina.yachting@st.t-com.hr	+385 22 435936
Sunčani Čarter d.o.o.	-	sunny.charter@gmail.com	-
OBALA d.o.o.	-	gary.conway@si.t-com.hr	+385 22 435235
MORSKA LASTAVICA D.O.O - GULET CHARTER	www.lastavica.hr	info@lastavica.hr	+385 22 436 552
AXIOM YACHTS D.O.O.	-	marina.yachting@st.t-com.hr	+385 98 745710
BILIĆ - NAUTIKA	-	damir.bilic1@si.t-com.hr	+385 22 435 523
MURTER			
SD NAUTIKA- GULET CHARTER	www.gulet-prviodisej.com	firstodisej@gmail.com	+385 92 1655 101
MORSKI VUK D.O.O.	-	sprungmann@si.t-com.hr	+385 22 435 936
MURTER			
IMMO DALMATIA obrt za usluge	www.immodalmatia.com	immodalmatia.cro@gmail.com	+385 98 236 950
JARUŠICA d.o.o.	www.jarusica.hr	jarusica@si.htnet.hr	+385 22 434 776
CHARTER MARINA HRAMINA	www.marina-hramina.hr	info@marina-hramina.hr	+385 22 431 111

CHARTER AGENCIES

JEZERA	🌐	@	☎
BB JEZERA	www.bbjezera.com	damir.bradasevic@gmail.com	+385 99 422 7 888
TISNO	🌐	@	☎
KORNATI CHARTER d.o.o.	www.kornati-charter.com	mail@kornati-charter.com	+385 99 820 1309
PIROVAC	🌐	@	☎
MARINA PIROVAC	www.marinapirovac.com/ charter	marina.pirovac@gmail.com	+385 994935225
VODICE	🌐	@	☎
ADRIATIC Yacht CHARTER	www.ayc.at	ayc@ayc-at.hr	+385 22 443 221
BRZI BRODOVI D.O.O.	-	magdalena.bakmaz@gmail.com	+385 981711191
JAN I VAL D.O.O.	-		+385 97 7010875, +386 41610488
KOLAWA D.O.O.	-	barbara385@tlen.pl	+385 91 5894739
ORCA	-	slavko@foka-charter.com	+385 91 517 2928
SAIL & FUN	www.sail-fun.net	sail-fun@si.t-com.hr	+385 91 56600714
T.O. ANDELA	-	info@cruising-babac.hr	+385 91 2017 668
THE YACHTING CLUB d.o.o.	www.the-yachting-club.com	maciej.stompor@dobrejachty.pl	+385 99 555 4321, +385 95 922 7654
VIA NAVIS D.O.O.	www.vianavis.hr	vianavis@vianavis.hr	+385 992124019
WOJCIK FABRYKA MEBLI SPOLKA Z OGRANICZONA ODPOWIEDZIALNOSCIA	-	anzul@st.t-com.hr	+385 21 321979
TRIBUNJ	🌐	@	☎
NEREUS YACHTING D.O.O.	www.nereusyachting.com	ininic78@gmail.com	+385989656843

PRIMOŠTEN	🌐	@	☎
DAMERAU D.O.O.	www.si.t-com.hr	veritas.yachting@si.t-com.hr	+385 22 571 736
YACHTING PRIBERNIG D.O.O.	www.veritas-yachting.com	veritas.yachting@si.t-com.hr	+385 22 571 736
FELYMA JACHT d.o.o.	www.felyma.sk	felyma@felyma.sk	+385 98 9598647
Nautički centar PINA I MARE d.o.o.	www.ncp-charter.com	booking@ncp.hr , pasko@ncp.hr	+385 98 336 580, +385 22 312 988, +385 22 312 999
VERITAS YACHTING d.o.o.	www.veritas-yachting.com	info@veritas-yachting.com	+385 22 571 736
ROGOZNICA	🌐	@	☎
UNICORN d.o.o.	www.unicorn.hr	vunicom@net.hr	+385 21 885 268
YACHT CHARTER D.O.O.	www.yacht-rent.com	yacht-charter@si.htnet.hr	+385 22 559 971
LUNARIS JAHTA	www.offshore-boote.at	sunce.jahta@si.t-com.hr	+385 22 571 761
EIBL	www.offshore-boote.at	sunce.jahta@si.t-com.hr	+385 22 571 461
SUNCE MORE D.O.O	www.offshore-boote.at	zeljka@suncejakta.t-com.hr	+385 22 571 461
MESARIĆ YACHT	www.brave-cats.com	grado@pizzeria-grado.at	+385 22 57 1461
BRAVE CATS	www.brave-cats.com	frapa@brave-cats.com	+385 97 797 9570
ŠEKO OBRT - GULET CHARTER	www.gocroatiasail.com	novi-dan1833@net.hr	+385 98 188 53 28
WASSER D.O.O.	www.first-class-sailing.com	sinisa@first-class-sailing.com	+385 99 217 4406

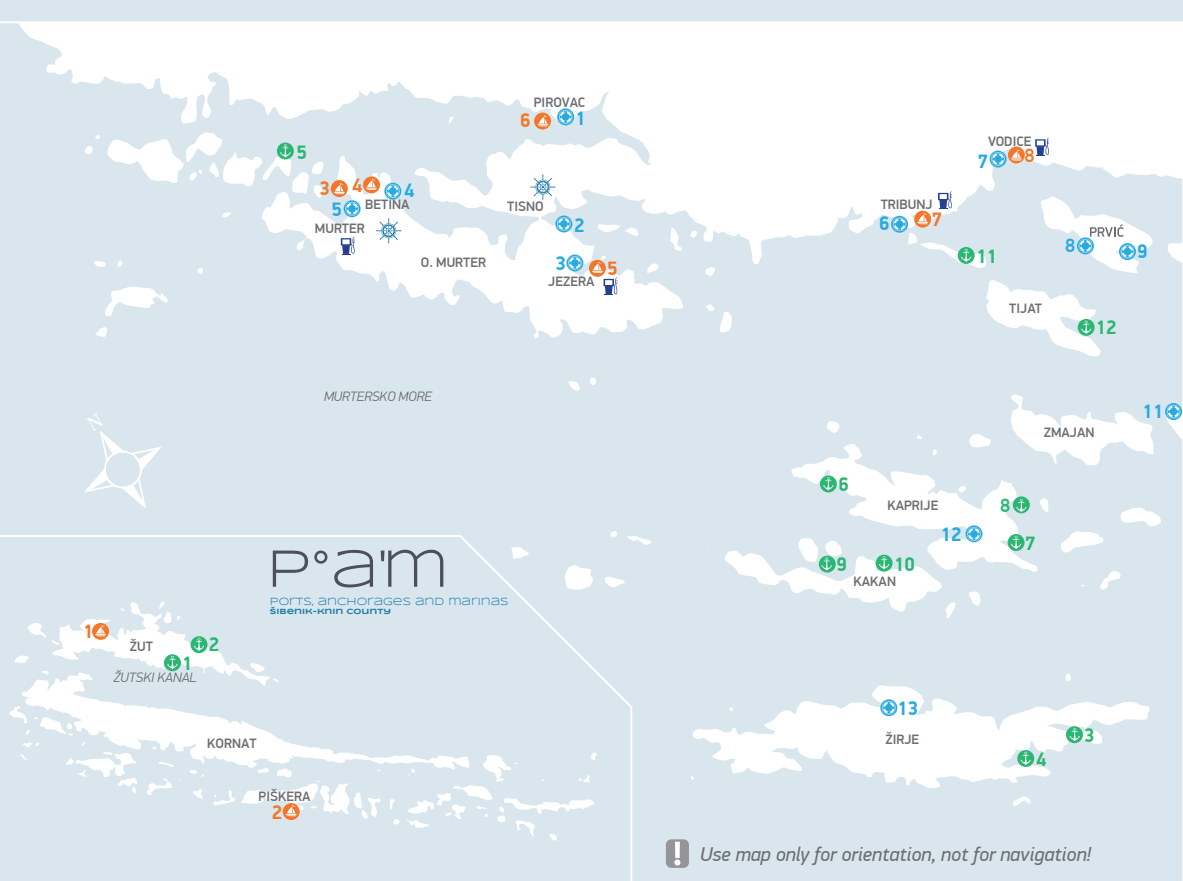


CHARTER AGENCIES

ŠIBENIK	🌐	@	☎
ADRIATIC CRUISING - GULET CHARTER	yachtsincroatia.com	info@adriatic-cruising.com	+385 91 202 11 05
ALMAGEST	www.almagest.hr	almagest1@si.t-com.hr	+385 22218704; +385 98846700
EKVATOR YACHTING doo	www.yachtclub.cz	yachtclub@atlas.cz	+42 073 624 2411
AMADEUS D.O.O.	www.amadesuadriatic.hr	ana@amadesuadriatic.hr	+385 993120181
ANA MORE YACHTING	www.anamoreyachting.com	croatia@anamoreyachting.com	+385 99 329 5669
ODISEJ YACHTING d.o.o.	www.odisey-yachting.com	info@odisej-yachting.com	+385 99 2265 650 +385 22 331 883
CHILLA SAILING	www.chillasailing.hr	info@chillasailing.hr	+385 91 254 1986
COSTAROSE MARINE D.O.O.	www.costarose.hr	bogusia@costarose.hr	+386 40325702
CYMBA	www.cbc-charter.com	marijanamec@gmail.com	+385 22 214 075
SPLENDID YACHTING	www.splendidoyachting.com	contact@splendidoyachting.com	+385 22 335 516, +385 22 310 828
GAĆINA ADRIATIC	www.adriatic-charter.com	info@gacina-adriaticcharter.hr	+385 91 2100100; +385 22 331465
GOLDEN COMPASS YACHTING	-	slobodan.brkic@gmail.com	+385 91 2635 406
MAESTRAL YACHT CHARTER	-	davejohnrobson@hotmail.co.uk	+385 99 3560080
Blue TRIPS	www.bluetrips-sailing.com		+385 91 9433 801
MARIS DAWN	www.veritas-yachting.com	veritas.yachting@si.t-com.hr	+385 22 571736
MGS- SKA	-	igor.dokic@loa.hr	+385 91 1503538



NOVA EUROSPECTRA	www.eurospectra.com	info@eurospectra.hr	+385 91 6001518
PHOEBUS d.o.o.	www.phoebus.hr	josip.pancirov@ncp.hr	+385 22 312-999
PLAVI HORIZONT d.o.o.	www.plavi-horizont.hr	info@more-yachting.com	+385 22 571 736
PREMIUM YACHT d.o.o.	premium-yachts.com	premiumyacht@gmail.com	+36703618854
PRIMA YACHTING D.O.O.	www.primayachting.gr	dragan.subasic@si.t-com.hr	-
ROVEREDO YACHTING d.o.o.	-	info@roveredo.hr; capt.vittorio@icloud.com	+385 91 3486959;
RSI CHARTER D.O.O.	-	danijelkraljev@gmail.com	+385 912538457;
SLAPTOURS NOVA	www.slaptours.hr	info@slaptours.hr	+385 22 311-460
SUN RENT	-	bulatm@aol.com	+385 98 1860727
SUNČANI ORAH d.o.o.	-	bulatm@aol.com	+385 98 1860727
SURF TRADE d.o.o.	-	surf@surfcahrter.biz	+385 99 4321 620
KELEMEN	www.kelemensailing.com	info@kelemensailing.com	+385 95 8632464;
ZAČIN ŽIVOTA	-	info@atv-racing.se	+385 95 5078 996
CELLARIUS	-	ive.pulic@gmail.com	+385 99 2265650



VHF FREQUENCIES ON ADRIATIC SEA

WEATHER REPORT FOR THE ADRIATIC SEA

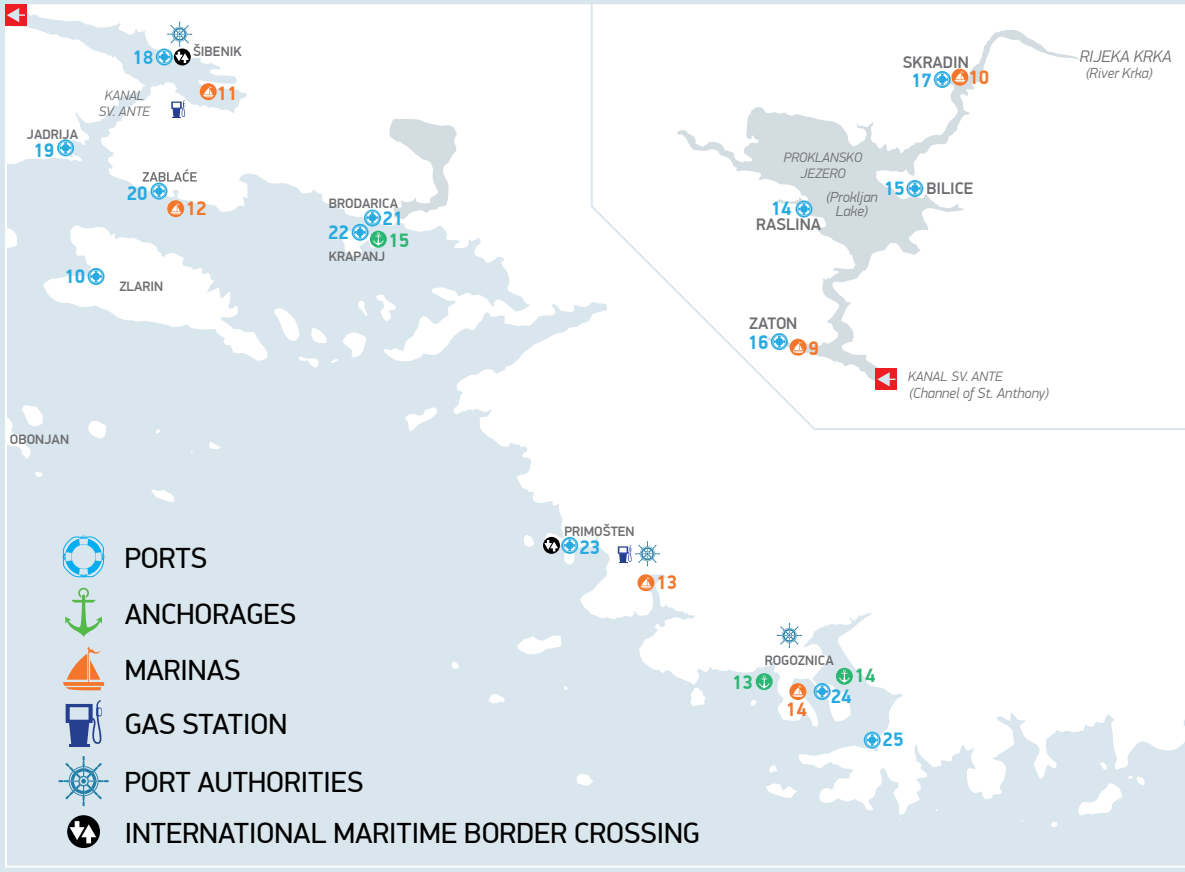
Shore-based radio stations emit daily weather reports and weather forecasts for the upcoming 12 and 24 hour periods, both in Croatian and in English:

Radio station	Call sign	VHF channel	Time
Rijekaradio	9AR	04, 20, 24, 81	5:35, 14:35, 19:35 UTC
Splitradio	9AS	07, 21, 23, 81	5:45, 12:45, 19:45 UTC
Dubrovnikradio	9AD	07,04	6:25, 13:20, 21:20 UTC

* UTC – universal time coordinating (= GMT, Greenwich Mean Time)



Port authorities supervise navigation in inner seawaters and territorial sea of the Republic of Croatia, they search and save human lives and possessions on the sea; they perform inspection activities of navigation safety and inspection supervision over maritime demesne, they register boats and delete them from the register, they control the registration book of boats, they determine navigation ability competence, they perform tonnage measurement of boats, they register boats and delete them from the register and they control the registration book of boats, they issue seaman's books, they determine seaman's competence to acquire knowledge about maritime affairs, they issue and control the registration book of issued authorisations for performing duties on boats and they perform other administrative, professional and technical activities of navigation safety on the sea according to the special law and other regulations.



CONSTANT WEATHER FORECASTS ON VHF - TRANSMITTERS
 Weather forecasts for the Croatian coastal region are provided in Croatian, English, Italian and German every ten minutes, and are updated at 7:00, 13:00 and 19:00 (local time). The summary presents an overview of the weather, a short forecast for the next 24 hours and information on air pressure.

VHF channel

- 73
- 69
- 67
- 73

Region

- northern Adriatic / western coast of Istria
- northern Adriatic / eastern part
- central Adriatic / eastern part
- southern Adriatic / eastern part

www.croatia-marine.com

International maritime border crossing Šibenik

🏠 Velimira Škorpika 5, 22000 Šibenik ☎ +385 22 347 117

Seasonal international maritime border crossing Primošten

☎ + 385 22 347 117 (from April to October)







CONTACTS



HARBORMASTER'S OFFICE / MARITIME TRAFFIC

ŠIBENIK

🏠 Obala Franje Tuđmana 8, 22000 Šibenik / 📞 +385 22 217 214 / 📠 +385 22 212 626

HARBOR BRANCH OFFICES

MURTER

🏠 Butina 2, 22243 Murter / 📞 +385 22 435 190

TISNO

🏠 Velika Rudina 1, 22240 Tisno / 📞 +385 22 439 313 / 📠 +385 22 439 860

VODICE

🏠 Trg Marine bb, 22211 Vodice / 📞 +385 22 443 055 / 📠 +385 22 441 604

PRIMOŠTEN

🏠 Porat 2, 22202 Primošten / 📞 +385 22 570 266 / 📠 +385 22 435 604

ROGOZNICA

🏠 Obala HRM 2, 22203 Rogoznica / 📞 +385 22 559 045 / 📠 +385 22 559 649

Port Authority Šibenik

🏠 Vladimira Nazora 53, 22000 Šibenik
📞 +385 22 218 001
🌐 www.portauthority-sibenik.hr

Šibenik- Knin County Port Authority

🏠 Draga 14, 22 000 Šibenik
📞 +385 22 219 852
📧 info@cpa-sibenik-knin.hr

Šibenik- Knin County Tourist Board

🏠 Fra Nikole Ružića bb, 22 000 Šibenik
📞 +385 22 219 072
🌐 www.dalmatiasibenik.hr
📧 info@dalmatiasibenik.hr

USEFUL PHONE NUMBERS

International country code for Croatia: **385**

Šibenik – knin county : **022**

Police: **192** National Search and Rescue Center: **9155**

A single number for all emergency situations: **112**

General information: **18981**

Information for local and intercity telephone numbers: **11888**

Information for international numbers: **11802**

Weather forecast and road conditions: **060 520 520**

Croatian Automobile Club (HAK): **+385 1 4640 800**

Authorized dealers for licenses for recreational fisheries at sea - **www.mps.hr/ribarstvo**

PARKS OF CROATIA- TICKETS ON LINE - **www.parkovihrvatske.hr/webshop**



**ŠIBENIK-KNIN COUNTY
TOURIST BOARD**

ISSUED BY : ŠIBENIK-KNIN COUNTY TOURIST BOARD

FOR PUBLISHER : ŽELJANA ŠIKIĆ

CONCEPT AND DESIGN : KOCKA D.O.O.

COOPERATORS : COUNTY OF ŠIBENIK – KNIN, PORT AUTHORITY OF ŠIBENIK – KNIN COUNTY, PORT AUTHORITY OF ŠIBENIK

PHOTO : ŠIBENIK-KNIN COUNTY TOURIST BOARD, LOCAL TOURIST BOARDS, CROATIAN NATIONAL TOURIST BOARD, PORT AUTHORITIES

COVER PAGE PHOTO : NOVENA

The publisher does not guarantee complete accuracy of published data and does not take responsibility for eventual inaccuracy or changes of information.



Dalmatia
Šibenik

ŠIBENIK KNIN COUNTY TOURIST BOARD

INFO@DALMATIASIBENIK.HR
WWW.DALMATIASIBENIK.HR

